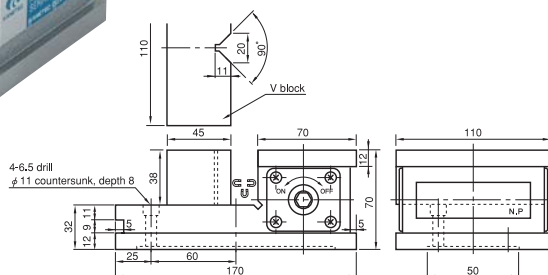


Model MPV MAGVICE*



MPV-4



[Application]

Suitable for securing irregular shaped workpieces or tapered workpieces and for machining end faces of round bars and flat workpieces.

[Features]

- The force to secure a workpiece is produced by a magnetic force. Thus, unlike mechanical clamping, no undue force is applied. (Nonmagnetic workpieces cannot be held.)
- The select handle can be operated from both sides.
- Can be mounted on a magnetic chuck on a machine.

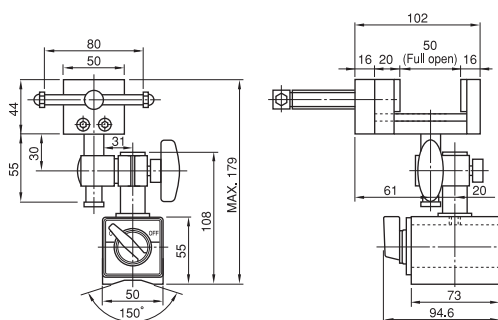
■ Magnetic force: Side slip resistance is 575 N (57.5 kg) for iron square bars of 30 mm × 30 mm × 130 mm and 480 N (48 kgf) for iron round bars of $\phi 30 \times 130$ mm thanks to the strong built-in permanent magnet. Thus, the MAGVICE works well in grinding operations also.

■ Mass: 7.3 kg

Model MPV-F FLEXIBLE VICE



MPV-F50A



[Application]

Suitable for temporarily holding workpieces during assembly.

Suitable for such jobs as manual filing and drilling and tapping of nonmagnetic materials.

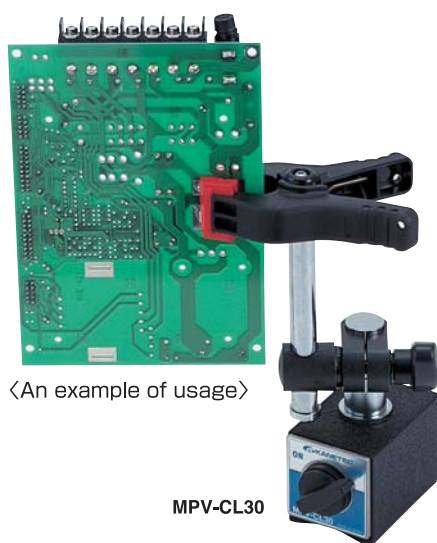
[Features]

- The employment of a powerful ON/OFF selectable magnet holder facilitates installation on iron-made worktables and worktables of machine tools.
- The vice can be tilted freely to secure workpieces according to their shapes and machining directions.
- The plates on the workpiece clamping parts are made of nylon to hold non-flat workpieces strongly. The plates are exchangeable. (Optional)

Model	Holding Power	Mass
MPV-F50A	1000N (100kgf)	2.7kg/6 lb

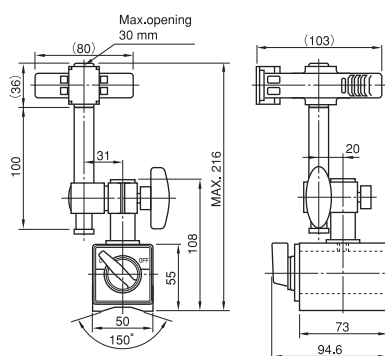
※ The holding power applies to SS400, thickness 10 mm and ground surface.

Model MPV-CL FLEXIBLE CLAMP



〈An example of usage〉

MPV-CL30



[Application]

Suitable for soldering of circuit board of electric parts.

Suitable for holding parts during assembly.

Suitable for wiring as it can clamp electric cables.

[Features]

- The employment of a powerful ON/OFF selectable magnet holder facilitates installation on iron-made worktables and worktables of machine tools.
- The clamp parts are equipped with tough plastic clampers and can be tilted freely.
- The clampers open 30 mm maximum and can be moved up and down in a range of about 90 mm. The clampers are exchangeable. (Optional)

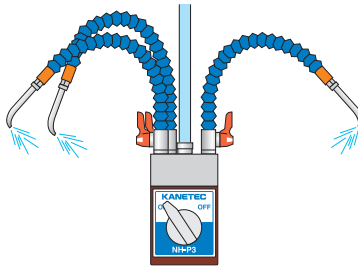
Model	Holding Power	Mass
MPV-CL30	1000N (100kgf)	2.7kg/6 lb

※ The holding power applies to SS400, thickness 10 mm and ground surface.

Model NH MAGNETIC TYPE NOZZLE HOLDER



An example of usage



[Application]

This holder is designed for holding a nozzle(s) at the end of cutting oil hose on machine tools. This can also be used to remove by injecting cutting liquid chips and particles produced during electric discharging.

[Features]

- Strong holding power enables the holder to be installed at any position.
- A flexible hose enables the nozzle tip to be positioned at any position and angle.
- The employment of a cock allows flowrate adjustment.
- The adjustable hose can be adjusted in length by removing or adding joints.

[mm (in)]

Model	Holding Power	Base Size	Inlet Dia	Hose Length	No. of Outlets	Mass
NH-P1	250N (25kgf)	φ70 (2.75) × 27 (1.06)	φ9	390 (15.3)	1	0.95kg/2.1 lb
NH-P3	500N (50kgf)	48 (1.89) × 75 (2.95) × 54 (2.12)	(0.35)	420 (16.5)	3	1.65kg/3.6 lb

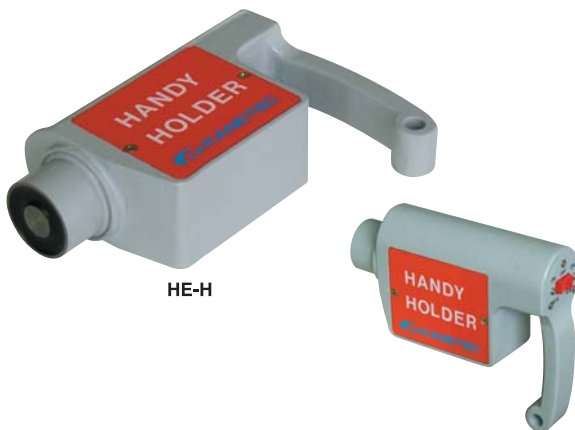
※ The maximum working pressure of the adjustable hose is 3.5kg/cm² for air and 2.1kg/cm² liquid. Note, however, that the hose posture may be changed by injection force within the above limits depending on injection directions. If such a case is likely to occur, adjust the flowrate with the cock.

※ The hose length includes the stainless steel nozzle part (70 mm) at the tip.

※ The holding power applies to SS400, thickness 10 mm and ground surface.

Model HE-H HANDY HOLDER BATTERY POWERED UNIT

Transportation assist tool by magnetic force produced by dry cells



[Application]

The handy holder works as an assisting device where heavy works such as steel plates need to be transported but they have no catch for lifting one side slightly or where stacked steel plates, etc. need to be taken out from a container or box safely. This Holder also helps assist cleaning the machine and surrounding areas after the end of machining. It attracts tangled chips, which are difficult to remove with brushes.

[Features]

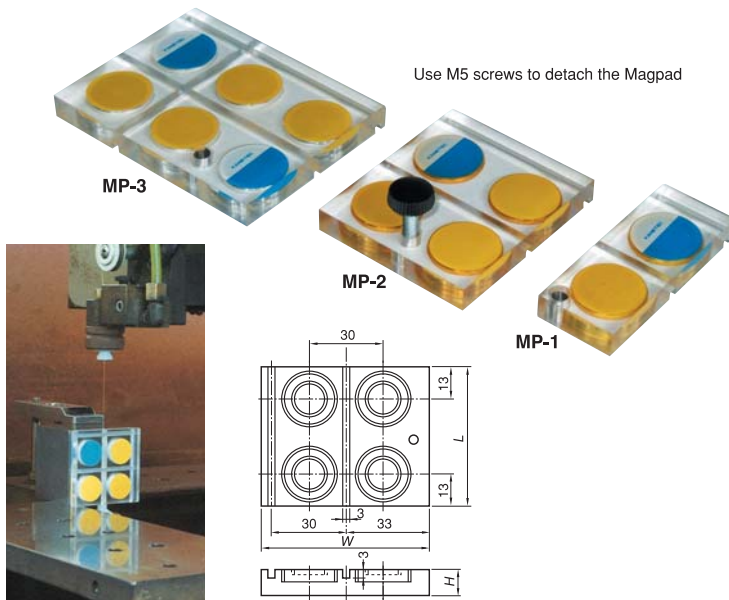
- A composite construction of a permanent magnet and electromagnet. A power source of only two pieces of Size D dry cells can produce strong holding power.
- Handy and cordless. Can be used in any places.
- The magnetic force can be turned on and off by one-hand single operation of the switch.

[mm (in)]

Model	Holding Power	Power Source	Duty Cycle	Dimensions	Mass
HE-H	300N (30kgf)	Size D dry cell × 2	50%ED	177 (6.96) × 145 (5.70) × 50 (1.96)	1.2kg/2.6 lb

※ The holding power applies to SS400, thickness 15 mm and ground surface.

Model MP MAGPAD*



[Application]

The Magpad is a device to prevent wire breakage by heat due to aerial discharge. It protects wire electrodes of wire electric discharge machines from separation of cooling liquid which is likely to occur at the start of discharging.

This Magpad can also be used to prevent dislocation or dropping of cut workpieces at the start or end of cutting.

[Features]

- The Magpad is made of transparent acrylic plate incorporating powerful magnets. Having a strong holding power, it enables setting wire while monitoring its position.
- No mechanical clamp is required. Attaching and detaching can be done efficiently and without a fear of damaging workpieces.
- Various models are available to suit any workpiece configuration.
- There is no possibility of rusting and the magnetic force is semi-permanent. The Magpad withstands repeated use and therefore is very economical.

[mm (in)]

Model	Holding Power	Dimensions			Mass
		Width	Length	Height	
MP-1	80N (8kgf)	66 (2.59)	26 (1.02)	9 (0.35)	35g/0.07 lb
MP-2	200N (20kgf)		56 (2.20)		70g/0.15 lb
MP-3	250N (25kgf)		86 (3.38)		110g/0.24 lb

※ The holding power applies to SS400, thickness 20 mm and ground surface.

ELECTROMAGNETIC CHUCKS

CHUCK CONTROLLERS

PERMANENT MAGNETIC CHUCKS

PERMANENT ELECTROMAGNETIC CHUCKS

PERMANENT ELECTROMAGNETIC CHUCKS

PERMANENT ELECTROMAGNETIC CHUCKS

PERMANENT ELECTROMAGNETIC CHUCKS

BLOCKS FOR MC

BLOCKS FOR MC

VACUUM CHUCKS

PROMELTA SYSTEM

PROMELTA SYSTEM

SINE BAR CHUCKS

SINE BAR CHUCKS

SINE BAR CHUCKS

INJECTION MOLDING MACHINE MOLD FIXTURE

INJECTION MOLDING MACHINE MOLD FIXTURE

WORKING TOOLS

WORKING TOOLS

MAGNETIC BLOCKS

MAGNETIC BLOCKS

MEASURING TOOL HOLDERS

MEASURING TOOL HOLDERS

MEASURING TOOLS

MEASURING TOOLS

MEASURING TOOLS

MEASURING TOOLS